

Surprise! A DIY AI solution can be more expensive than a pre-built one

HPE Private Cloud AI is a turnkey solution that can help enterprises get AI projects up and running quickly.

There's no question generative AI is changing how businesses operate in the 21st century. Nine out of 10 enterprises plan to dramatically increase their AI investments over the next three years,¹ and organizations plan to spend nearly \$650 billion implementing GenAI in 2025 alone.²

Despite this growth, organizations are still wrestling with the best ways to deploy AI. What are the optimal environments for AI workloads? Should they develop their own AI practices or customize solutions built by someone else?

Today, more than two-thirds of enterprises are running AI experiments in the public cloud,³ largely for reasons of speed and cost. Using public infrastructure can be faster for deploying an initial proof of concept and requires a relatively small up-front investment. But most of these experiments never make it past the pilot phase. And when it comes to deploying AI into production, relying entirely on public cloud infrastructure may be significantly more expensive over the long run. In fact, over a three-year period, total cost of ownership for organizations using HPE Private Cloud AI can be up to 76% lower.⁴

"There are instances where testing in the public cloud makes sense," says Michael Corrado, senior worldwide manager for AI and private cloud at Hewlett Packard Enterprise. "But as you move into production, you need a reliable platform you can build on—one whose costs aren't going to explode as you scale."

Managing your own AI infrastructure offers several advantages. It can keep operating expenses from spiraling out of control as your needs grow. In-house systems can also be easier to fine-tune performance and optimize for specific use cases. And perhaps most important, your organization's crown jewels—its proprietary data—remain entirely in your control.

But adopting this transformative technology is time and resource intensive. Seven out of 10 organizations need a year or more to resolve challenges around adoption and ROI.⁵ And more than a quarter of companies say difficulty implementing AI and insufficient internal technical talent are two of the biggest challenges they face.⁶

Most organizations lack the expertise and infrastructure to build an AI practice from scratch, and those that do will find it more expensive and riskier to build themselves with open-source toolsets, says Corrado. That's why HPE partnered with NVIDIA to offer turnkey private cloud solutions that combine hardware, software, and a complete implementation framework, allowing AI-ready organizations to get up and running in a matter of days.

"Enterprises today are struggling to successfully transition from AI pilots to production," notes Corrado. "HPE Private Cloud AI's bundle of hardware, software, and services can rapidly prove the business value of POCs and dramatically accelerate AI adoption throughout the organization."



¹ ["Superagency in the workplace: Empowering people to unlock AI's full potential,"](#) McKinsey & Co., January 2025.

² ["Gartner Forecasts Worldwide GenAI Spending to Reach \\$644 Billion in 2025,"](#) Gartner, March 2025.

³ ["2025 State of the Cloud Report,"](#) Flexera, March 19, 2025.

⁴ ["The Economic Benefits of HPE Private Cloud AI With NVIDIA AI Computing by HPE,"](#) Enterprise Strategy Group, March 2025.

⁵ ["Deloitte's State of Generative AI in the Enterprise Quarter four report,"](#) Deloitte, January 2025.

⁶ Ibid.

The fastest way to build your AI strategy

For most enterprises, buying and fine-tuning a pre-built solution can not only reduce complexity but also save enormous amounts of time and money. TCO for HPE Private Cloud AI can be up to 50% lower than a DIY approach, thanks to reduced engineering, operational, and licensing costs.⁷

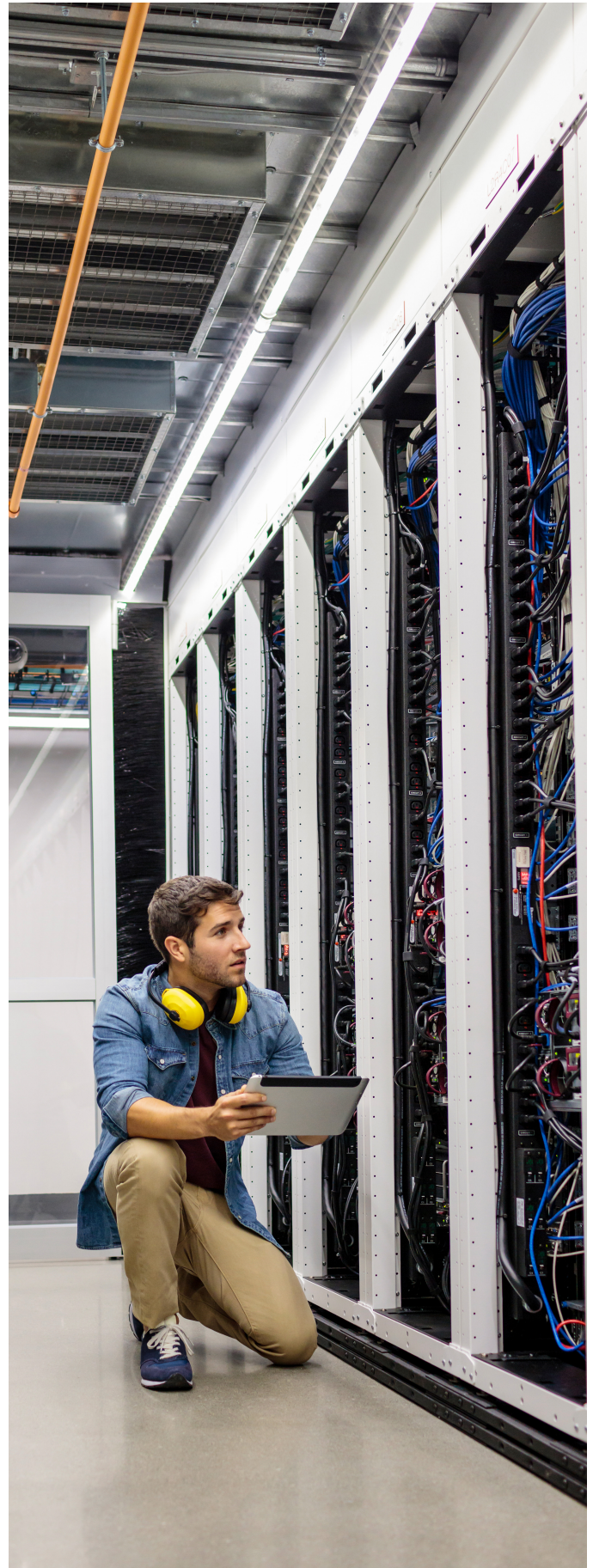
HPE Private Cloud AI, part of the NVIDIA AI Computing by HPE initiative, is a turnkey solution designed to help enterprises achieve their AI ambitions. The solution combines NVIDIA accelerated computing, software, networking, and applications with HPE compute, storage, and software. The rich ecosystem of proprietary and HPE-supported open-source tools simplifies infrastructure configuration and management, allowing IT teams to rapidly deploy AI workloads and scale projects while maintaining the privacy and security of enterprise data.

HPE Private Cloud AI is built on HPE ProLiant Compute Gen12 servers, with preconfigured, scalable starting points that range in size depending on your AI use case and number of supported users.

NVIDIA AI Enterprise software and HPE AI Essentials Software offer a comprehensive suite for AI development and deployment, making it easy to download your preferred large language model and immediately begin training it on your data. This collection of curated self-service tools allows developers to build AI applications up to 90% faster than through traditional methods.⁸ Organizations can deploy technologies like GenAI chatbots with a single click.

Premium advisory services are available to smooth out any post-deployment wrinkles, adds Corrado. HPE's consulting partners can also help you optimize the performance and profitability of your AI workloads, help you measure TCO, and improve your AI carbon footprint. And because both HPE and NVIDIA are constantly making the latest technology available to customers, enterprises need not fear rapid obsolescence or the inability to quickly scale.

"You know these solutions are going to work because we've tested and validated them," Corrado says. "And because both the hardware and software are constantly updated, you never need to worry about falling behind. You simply add more infrastructure, and the built-in federated architecture combines deployments into shared resource pools and directs workloads to the right accelerator."



⁷ ["The Economic Benefits of HPE Private Cloud AI With NVIDIA AI Computing by HPE,"](#) Enterprise Strategy Group, March 2025.

⁸ ["HPE Private Cloud AI with NVIDIA AI Computing by HPE: Essential to Accelerating GenAI Industrial Transformation,"](#) The Futurum Group, February 2025.

Winning the AI race

As businesses push forward to take advantage of the insights and innovations AI can bring, time to market becomes a key differentiator. Enterprises don't have the luxury to wait for the technology to settle down, laboriously cleanse their data, and ponder which use cases to experiment with.

The pressure to gain a first-mover advantage is building, and the time to get started is now.

"You can't wait to provide an AI platform for your users, and you can't get stuck with a solution that doesn't scale and grow with you as AI technology advances," Corrado says. By getting started from a place of proven AI profitability and customizing to your unique needs, you enable your entire enterprise to succeed with AI, leveraging a reliable and future-ready AI platform.

Visit [HPE.com](https://hpe.com)

Learn more at

[HPE.com/Private-Cloud-AI](https://hpe.com/Private-Cloud-AI)



[Chat now](#)

© Copyright 2025 Hewlett Packard Enterprise Development LP. The information contained herein is subject to change without notice. The only warranties Hewlett Packard Enterprise products and services are set forth in the express warranty statements accompanying such products and services. Nothing herein should be construed as constituting an additional warranty. Hewlett Packard Enterprise shall not be liable for technical or editorial errors or omissions contained herein.

a50013351ENW

HEWLETT PACKARD ENTERPRISE

hpe.com

